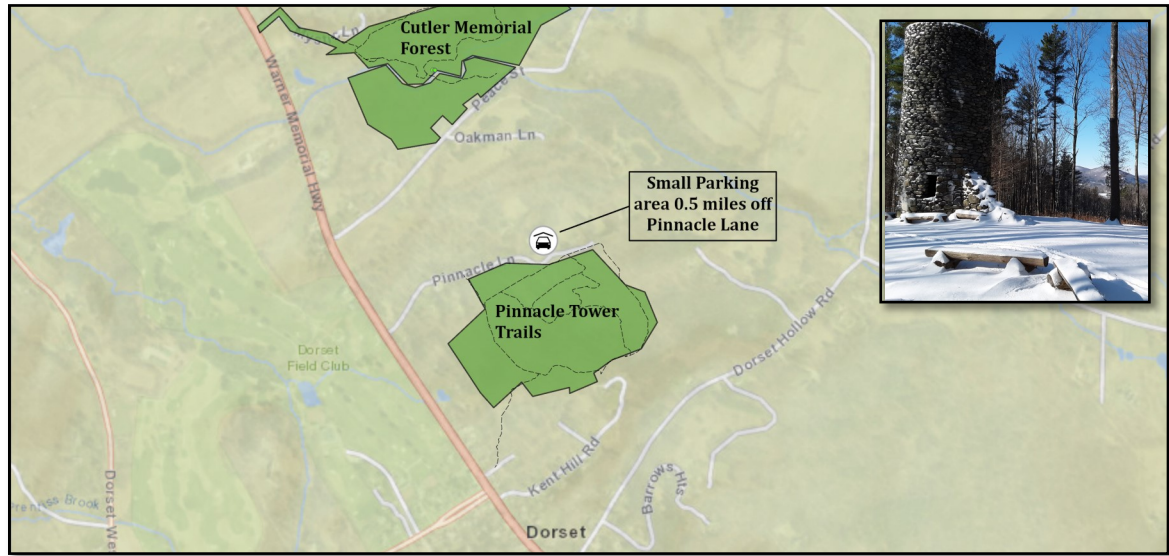


**HIKING
PINNACLE
FOREST
TRAILS
Dorset,
Vermont**

www.dorsetvt.org/hike



Did you know there is a castle-like tower just minutes from the Dorset town Green?

The Pinnacle Tower was built in 1910 by Miss Cecelia deNottbeck, the great-grand daughter of John Jacob Astor. She had the stone tower built at the top of the hill to replicate a "ruin" from the English landscape. 2010 marked the 100th year that the tower has stood on the hill above Dorset Village.

Dorset acquired the 35-acre forested property in 2005 through the generosity of the late Robert & Margaret Keeler.



View from inside the tower.



A magical sight in the midst of the woods.

Do you have any praises, suggestions, questions or comments?

Please Email:

hikedorset@gmail.com

Thank you for visiting the Pinnacle Tower and trails!



@hikedorset

Pinnacle Tower Hike:

Distance: 0.4 miles

Elevation Change: less than 100'

Hiking Time: ~30 minutes

From the small parking area (there is a kiosk and large map), take the **blue trail for the most direct way to the tower**. A hike of **0.4 miles** ascending gently will bring you to the tower and lookout area. From the tower, the blue trails continues down the hill and connects with the orange loop. The orange loop is 1 mile total and leads back to the parking area from either way.

Special Considerations:

The Pinnacle Forest property is in the center of several residential areas and homes are visible through the woods along the trails. Please be respectful to private properties and remain on the designated trails.

Please keep dogs on leash and remove any pet waste while hiking.

Thank you for keeping Dorset properties beautiful!



View from top of Pinnacle Hill

Hiking is a powerful health choice!

Exercising outdoors can help:

Lower Blood Pressure

Strengthen Relationships

Weight Loss

Decrease respiratory disease risks

Reduce Anxiety

Build Muscles

Improve Heart Health

Welcome to the Pinnacle Tower Trails

In 1910, Miss Cecelia deNottbeck had a stone tower built at the top of the hill to replicate a ruin from the English landscape. Please enjoy the trails and the tower!

Hiking Trails

- Orange Trail: 1 mile
- Blue Trail: 1/2 mile
- Yellow Trail: 0.18 miles

NO CAMPING, FIRE PITS, LITTERING, OR ALCOHOL ON PROPERTY.

Please call the Bennington Sheriff Dispatch: 802.442.4900