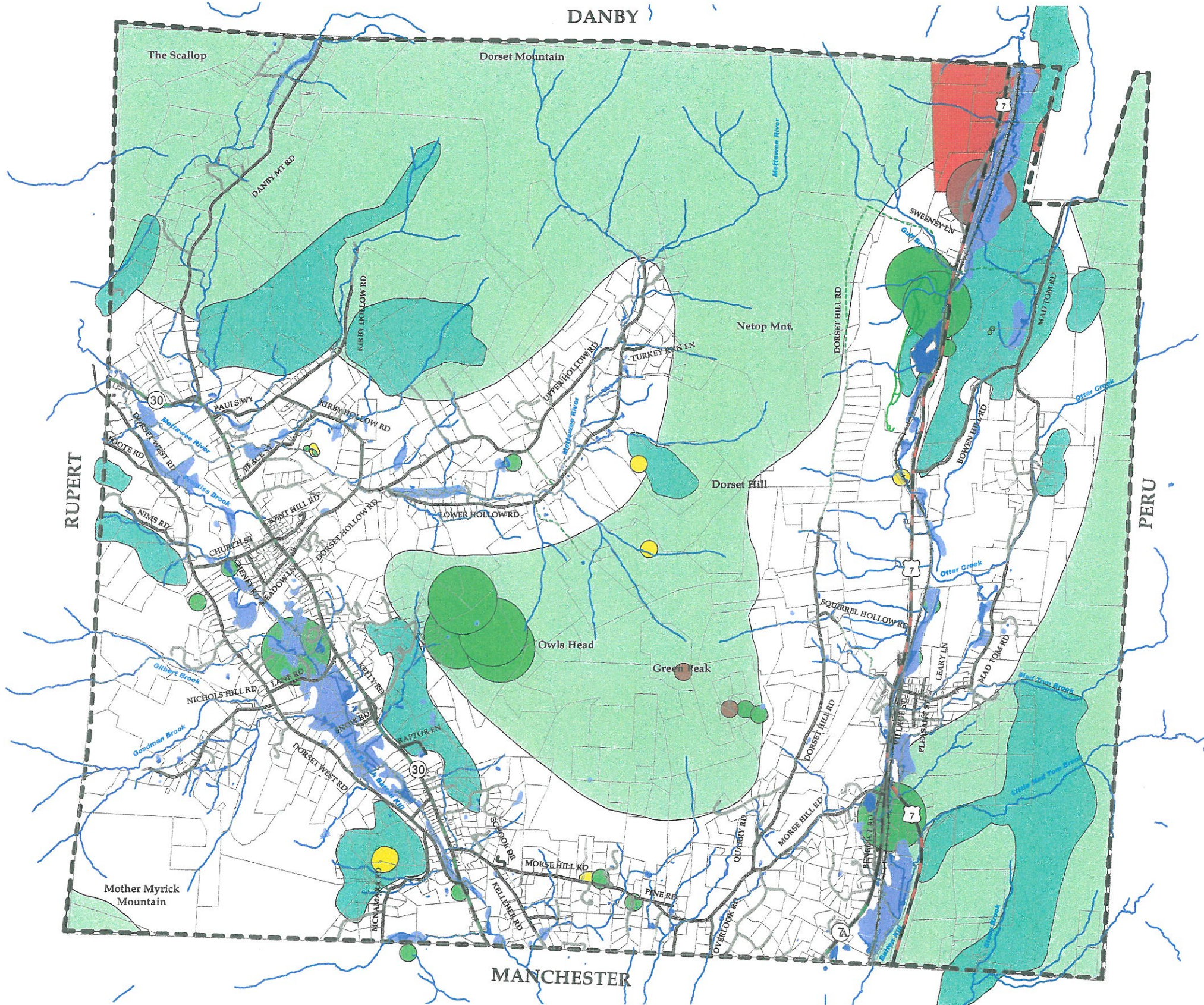
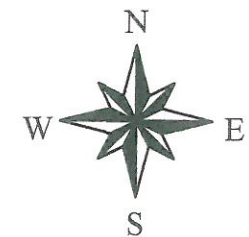


Town of Dorset, Vermont Map 2 Natural Resources










- Parcel Lines
- Streams
- Ponds
- Wetlands
- Important Wildlife Habitats**
- Rare or Endangered Animals
- Rare or Endangered Plants
- Rare Natural Communities
- Deer Wintering Areas (Deer Yards)
- Bear Travel Corridors
- Bear Habitat

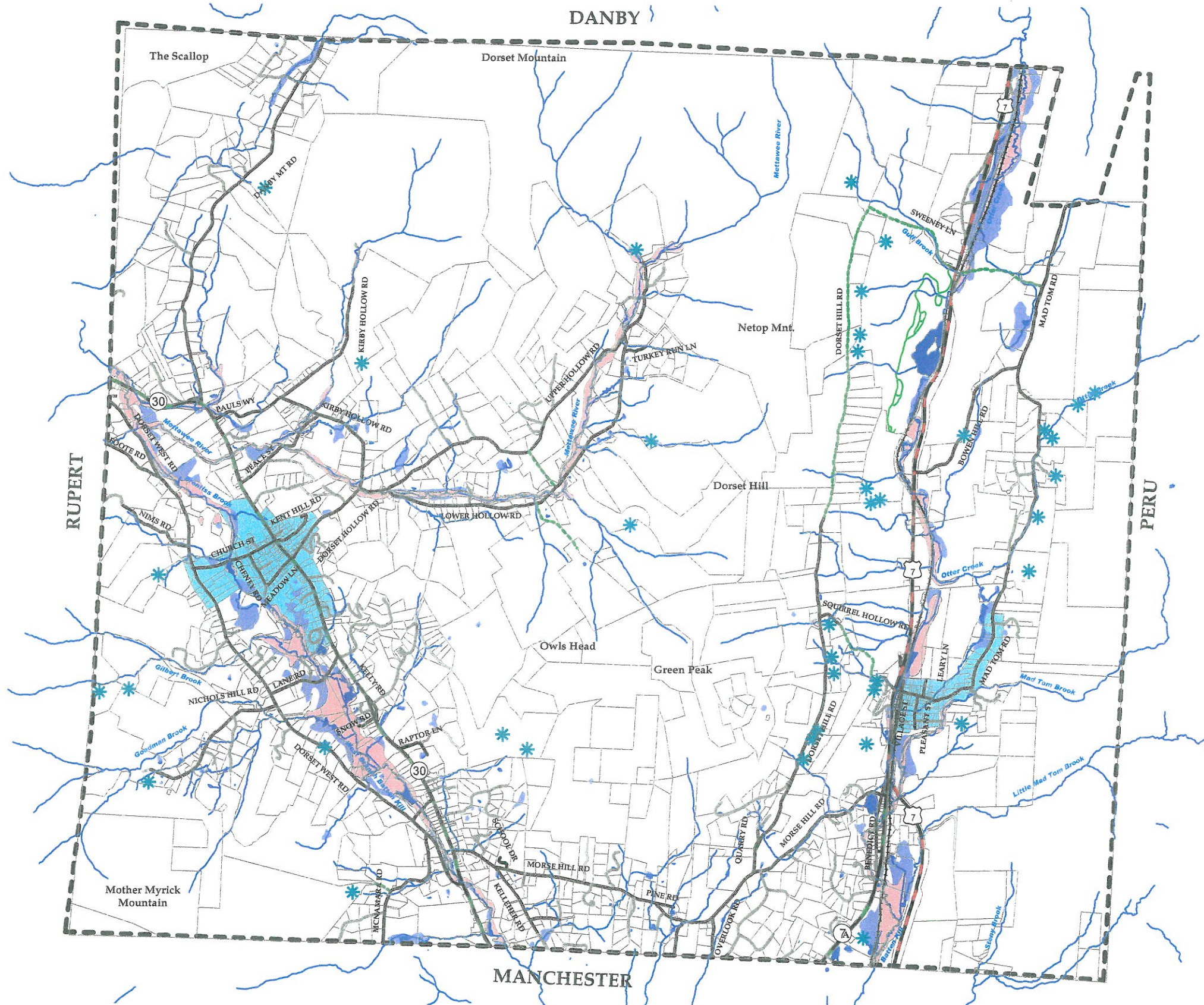
All base map data was downloaded from the VCGI data clearinghouse in March 2009. The Dorset parcel data was updated in 2007 by Cartographic Technologies, Inc.



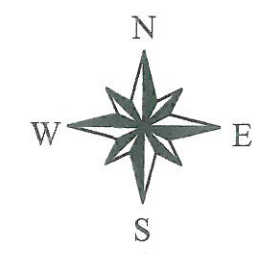
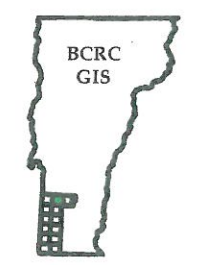
Map produced May 29, 2009 by
Bennington County Regional Commission
111 South Street, Suite 203
Bennington, Vermont 05201

Town of Dorset, Vermont Map 3 Water Resources Map

-  Seeps and Springs
-  Parcel Lines
-  Streams
-  Ponds
-  100 Year Flood Plain
-  Wetlands
-  Water Service Areas




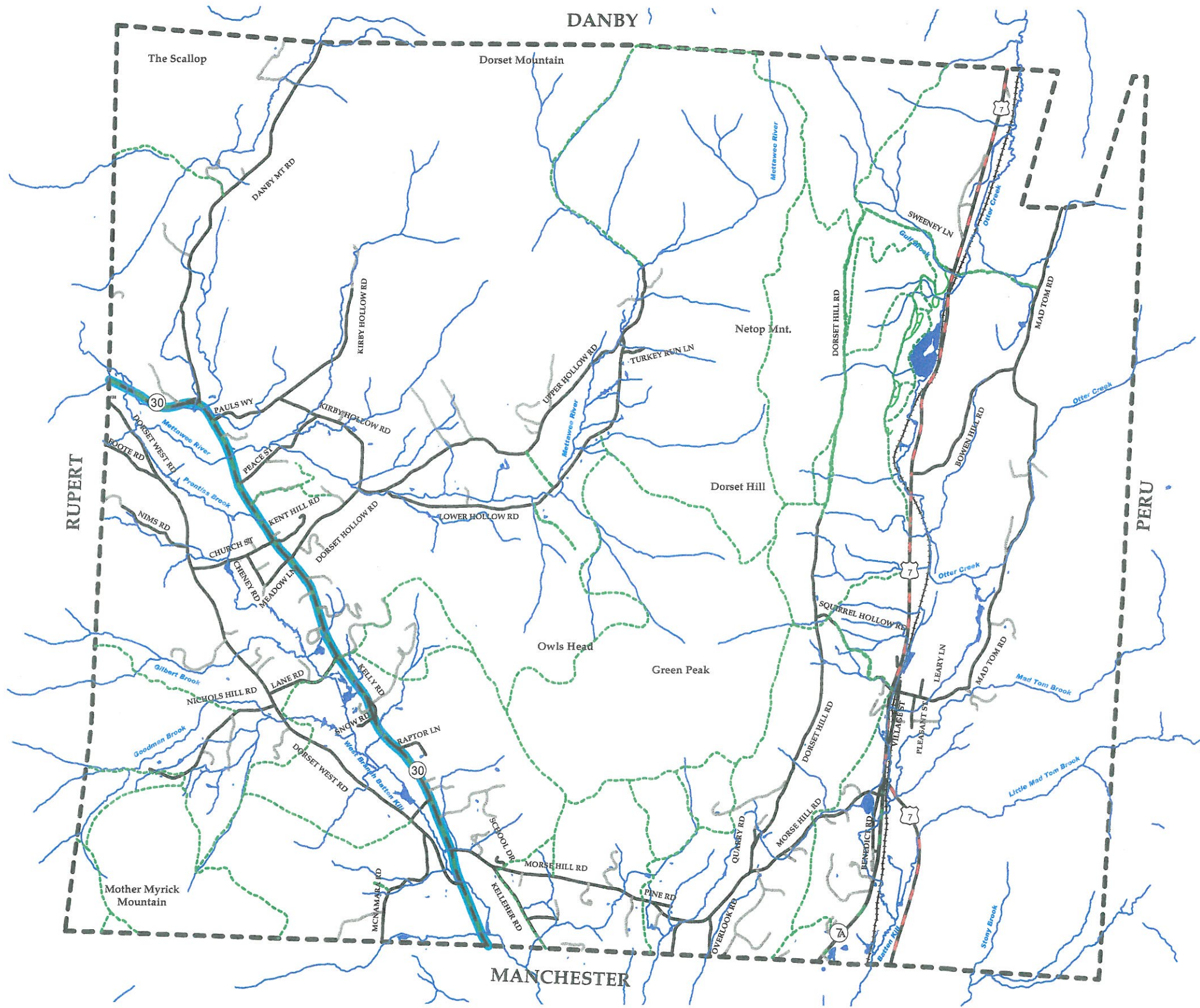
All base map data was downloaded from the VCGI data clearinghouse in March 2009. Flood plains were digitized from the FEMA Flood Insurance Rate Maps by BCRC. Seeps and springs were mapped by the Vermont Geological Survey. The Dorset parcel data was updated in 2007 by Cartographic Technologies, Inc.



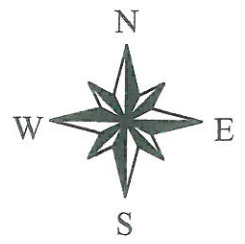
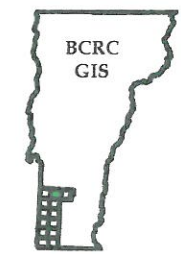
Map produced May 29, 2009 by
Bennington County Regional Commission
111 South Street, Suite 203
Bennington, Vermont 05201

Town of Dorset, Vermont Map 4 Transportation Map

-  Town Highway
-  State Highway
-  U.S. Highway
-  Private Road
-  Forest Road
-  Trail
-  Stone Valley Byway
-  Railroad



All base map data was downloaded from the VCGI data clearinghouse in March 2009. Trails were mapped by Art Gilbert and GPSed by BCRC.

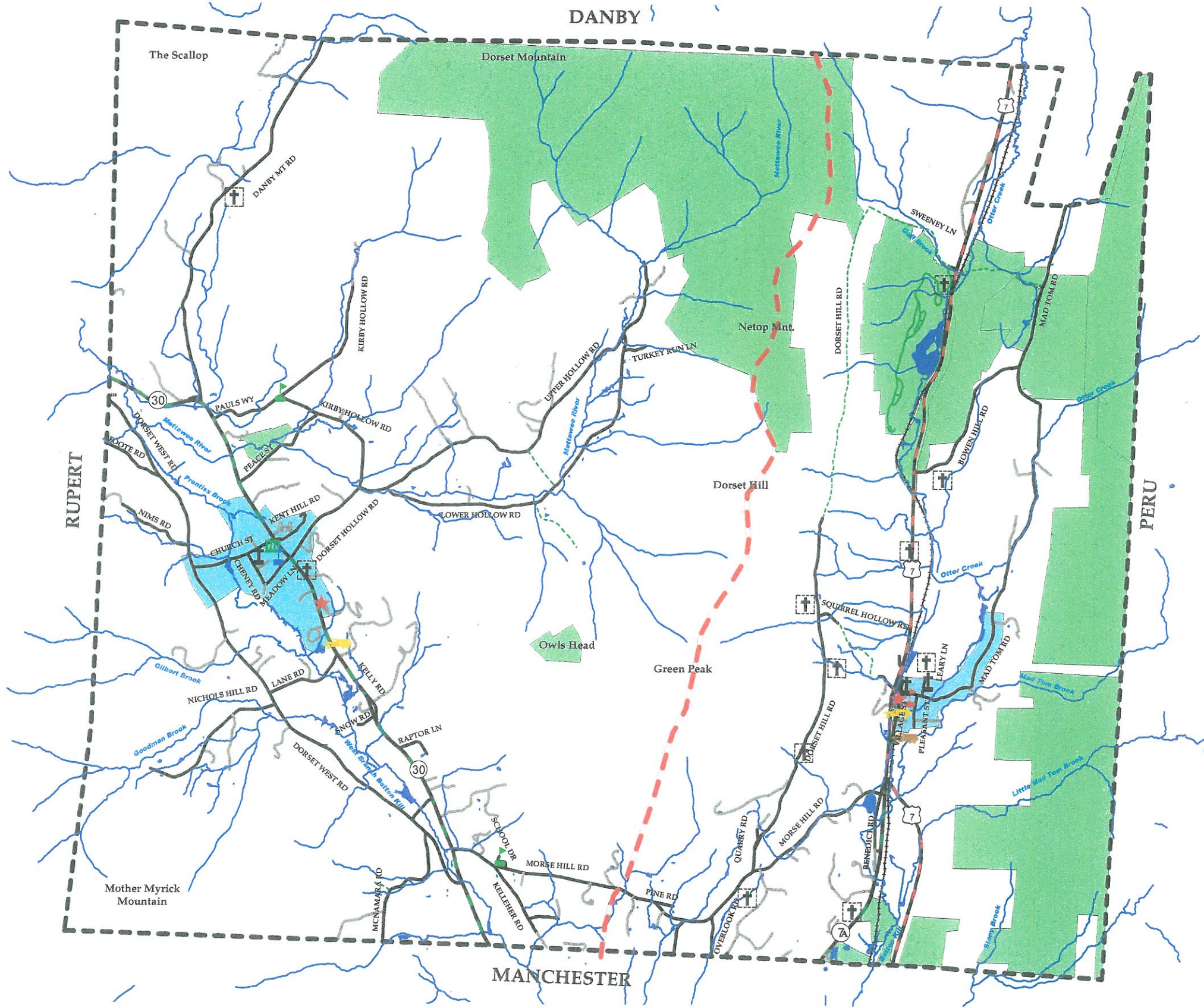


Map produced May 29, 2009 by
Bennington County Regional Commission
111 South Street, Suite 203
Bennington, Vermont 05201

Town of Dorset, Vermont

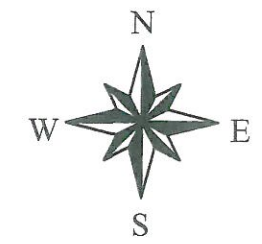
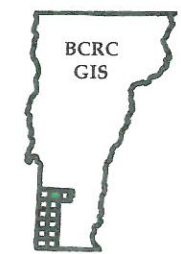
Map 5

Community Facilities



- Town Office
- School
- Post Office
- Church
- Fire Station
- Library
- Museum
- Town Highway Garage
- State Highway Garage
- Cemetery
- Fire District Boundary
- Water Service Areas
- Public Lands

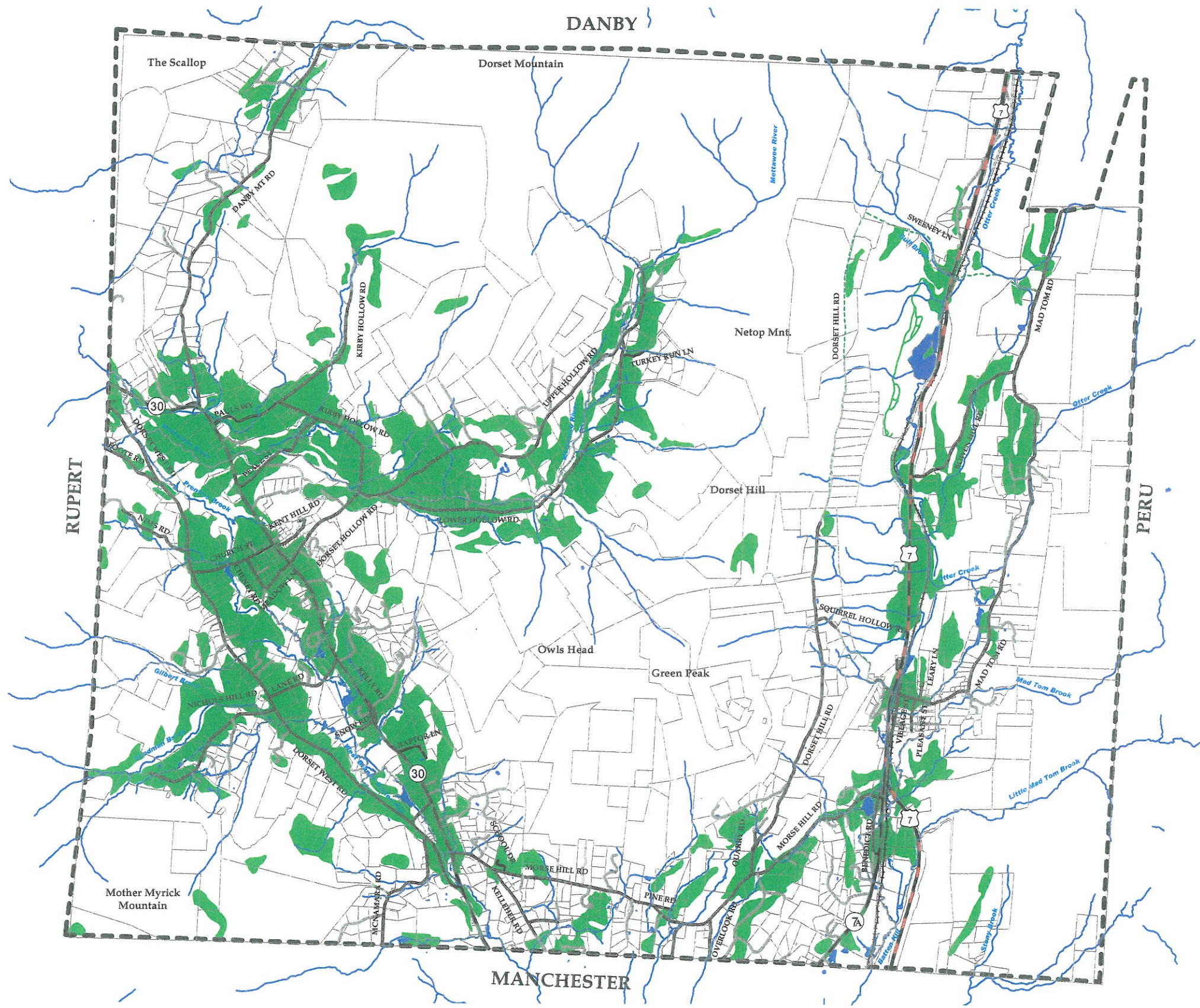
All base map data was downloaded from the VCGI data clearinghouse in March 2009. The Dorset parcel data was updated in 2007 by Cartographic Technologies, Inc. Water service areas and the fire district boundaries are approximate.



Map produced May 29, 2009 by
Bennington County Regional Commission
111 South Street, Suite 203
Bennington, Vermont 05201

Town of Dorset, Vermont Agricultural Soils

-  Parcel Lines
-  Streams
-  Ponds
-  Agricultural Soils



All base map data was downloaded from the VCGI data clearinghouse in March 2009. The Dorset parcel data was updated in 2007 by Cartographic Technologies, Inc.



Map produced May 29, 2009 by
Bennington County Regional Commission
111 South Street, Suite 203
Bennington, Vermont 05201